

TriFlex

Manufacturing



SEALSAFE PRODUCTS
CONDUIT AND CABLE PRODUCTS

for

HARSH AND HAZARDOUS
ENVIRONMENTS

Certificate ANZEx 09.3018



SEALSAFE ZONE 1 HAZARDOUS AREA CONDUIT AND FITTINGS

Sealsafe provides a range of nickel plated brass barrier fittings for use with flexible braided PVC conduit, flexible metallic liquidtight conduit and rigid conduit.

Installation is fast and simple. All fittings can be easily attached to the conduit in the field eliminating the need for pre-assembled fixed length conduits. Similarly constructed fittings are available for use with either braided PVC or flexible metallic liquidtight conduit.

No mess no fuss, Sealsafe does away with the need for cumbersome potting liquids using a simple co-extruded epoxy putty packed into a conventional style fitting making installation possible at any angle.

A "universal" barrier fitting is available. A union style action means ease of installation in conduit runs requiring a barrier to restrict the passage of gases, vapours or flames from one part of the electrical system to another.

Page	Product	Description
1	FC -16, 19	Fibre Braid PVC Conduit
2	FHC-2002, 2502	Braided Conduit Fitting (non-FLP)
3	FHC-2003, 2503	Male Barrier Fitting for Braided Conduit
4	FHC-075, 100	Female Barrier Fitting for Braided Conduit
5	FLC-075, 100	Female Barrier Fitting for Liquidtight Conduit
6	FLC-20, 25	Male Barrier Fitting for Liquidtight Conduit

PVC BRAIDED CONDUIT



Application: Type FC Fibre Braid Reinforced Flexible PVC Conduit for use with Sealsafe type FHC conduit fittings.

Description: A synthetic reinforcing braid is woven over the flexible PVC core. A flexible outer PVC jacket is extruded over the reinforcing braid to produce a Tough, resilient flexible conduit.

Core Material: Black virgin PVC.

Jacket Material: Orange Anti Static Virgin PVC with good resistance to petroleum products (no significant change in properties following 1000 hours exposure to fuel vapour) Flame retardant jacket complies with clause 1.12.3 (flammability test) of AS 2053. Refer Test Report 4667/2.

Degree of Protection: IP68

Installation: Refer to type FHC fittings

Part Number	Bore (mm)	Use with Fittings
FC-16	16.0	FHC-2002, 2003, 075
FC-19	19.0	FHC-2502, 2503, 100

BRAIDED CONDUIT FITTING



Application: An easy to use conduit fitting for use with type FC fibre braid reinforced flexible PVC conduit. Can be used in Zone 1 flameproof installations when used in conjunction with a Sealsafe barrier fitting.

Description: The fitting incorporates a swivelling action to facilitate Installation. Type FC conduit is inserted into the fitting Nut. (Fig 1.) Screwing the Body into the Nut locks the conduit to the Body. (Fig 2.) An inspection hole in the Nut ensures the conduit is in the correct position after assembly.

Material: Nickel plated brass.

Type of Protection: Zone 21 (DIP)

Degree of Protection: IP65

Installation: Refer to Instruction Sheet No. 1

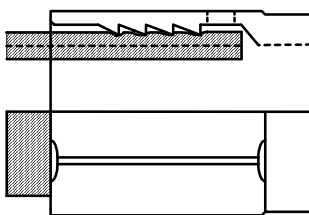


Fig 1.

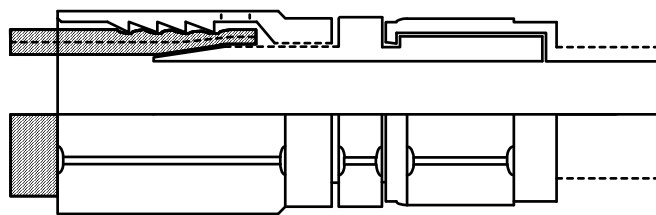


Fig 2.

Part Number	Bore (mm)	Thread Size	Use with Conduit
FHC-2002	13.5	M20 x 1.5	FC-16
FHC-2502	18.0	M25 x 1.5	FC-19



MALE BARRIER FITTING FOR PVC BRAIDED CONDUIT



Application: Sealsafe male barrier fitting for use with type FC, PVC braided conduit in Zone 1 flameproof installations.

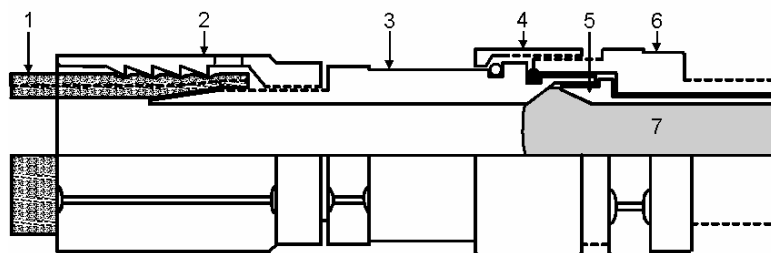
Description: A multi-part fitting with the ease of installation of a union. The fitting incorporates an internal chamber for packing epoxy putty around the conductors. Type FC flexible PVC conduit is attached simply by inserting the conduit into the fitting Nut and attaching the Back Body. A free turning Gland Nut locks the Front and Back Bodies together.

Material: Nickel plated brass.

Type of Protection: Exd IIB Zone I, DIP Zone 21

Degree of Protection: IP65

Installation: Refer to Instruction Sheet No.2



1. Type FC Conduit
2. Nut
3. Back Body
4. Gland Nut
5. Sleeve
6. Front Body
7. Packed Chamber

Catalogue Number	Bore (mm)	Thread Size	Use with Conduit
FHC - 2003	13.5	M20 x 1.5	FC-16
FHC - 2503	18.0	M25 x 1.5	FC-19

FEMALE BARRIER FITTING FOR USE WITH PVC BRAIDED CONDUIT



Application: Sealsafe female barrier fitting for use with type FC, PVC braided conduit in Zone 1 flameproof installations.

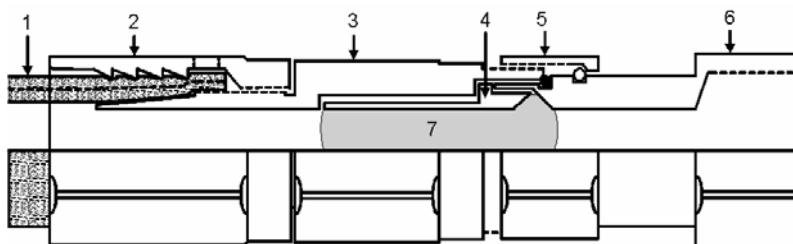
Description: A multi-part fitting with the ease of installation of a union. The fitting incorporates an internal chamber for packing epoxy putty around the conductors. Type FC flexible PVC conduit is attached simply by inserting the conduit into the fitting Nut and attaching it to the Back Body. A free turning Gland Nut locks the Front and Back Bodies together.

Material: Nickel plated brass.

Type of Protection: Exd IIB Zone I, DIP Zone 21

Degree of Protection: IP65

Installation: Refer to Instruction Sheet No.7



1. Type FC Conduit
2. Nut
3. Back Body
4. Sleeve
5. Gland Nut
6. Front Body
7. Packed Chamber

Catalogue Number	Bore (mm)	Entry Size	Use with Conduit
FHC - 075	13.5	3/4" BSP	FC-16
FHC - 100	18.0	1" BSP	FC-19



FEMALE BARRIER FITTING FOR USE WITH FLEXIBLE METALLIC LIQUIDTIGHT CONDUIT



Application: Sealsafe female barrier fitting for use with flexible metallic liquid tight conduit in Zone 1 flameproof installations.

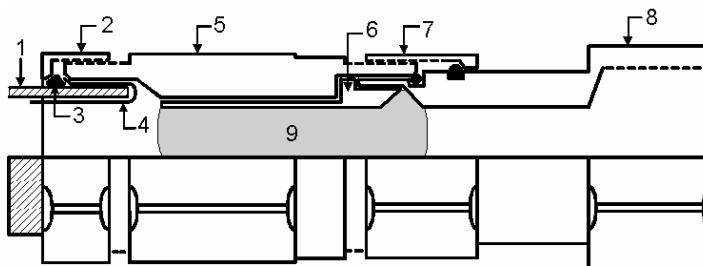
Description: A multi-part fitting with the ease of installation of a union. The fitting incorporates an internal chamber for packing epoxy putty around the conductors. Flexible metallic liquid tight conduit is attached to the Back Body. A free turning Gland Nut locks the Front and Back Bodies together.

Material: Nickel plated brass.

Type of Protection: Exd IIB Zone 1, DIP Zone 21

Degree of Protection: IP65

Installation: Refer to Instruction Sheet No.6



- 1. Liquidtight Conduit
- 2. Conduit Nut
- 3. Conduit Gland Ring
- 4. Conduit Ferrule
- 5. Back Body
- 6. Sleeve
- 7. Gland Nut
- 8. Front Body
- 9. Packed Chamber

Catalogue Number	Bore (mm)	Entry Size	Use with Conduit
FLC - 075	13.5	3/4" BSP	LT-11
FLC - 100	18.0	1" BSP	LT-12



MALE BARRIER FITTING FOR USE WITH FLEXIBLE METALLIC LIQUIDTIGHT CONDUIT



Application: Sealsafe male barrier fitting for use with flexible metallic liquid tight conduit in Zone 1 flameproof installations.

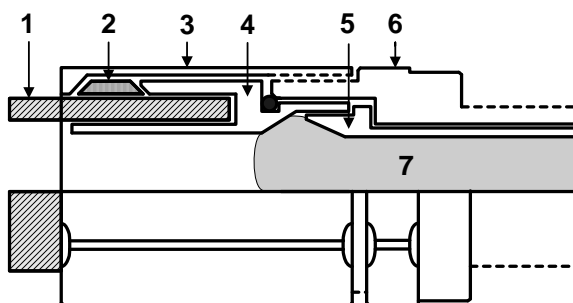
Description: An easy to use fitting incorporating an internal chamber for packing epoxy putty around the conductors. Assembling the fitting is a simple process. The Gland Nut, Gland Ring and Ferrule are first installed on the liquid tight conduit. Epoxy putty is packed around the conductors and the assembly completed by tightening the free turning Gland Nut on the Body.

Material: Nickel plated brass.

Type of Protection: Exd IIB Zone 1

Degree of Protection: IP65

Installation: Refer to Instruction Sheet No.5



1. Liquidtight Conduit
2. Gland Ring
3. Conduit Nut
4. Ferrule
5. Sleeve
6. Body
7. Packed Chamber

Catalogue Number	Bore (mm)	Thread Size	Use with Conduit
FLC - 20	13.5	M20 x 1.5	LT-11
FLC - 25	18.0	M25 x 1.5	LT-12



UNIVERSAL BARRIER FITTING



Application: Sealsafe universal barrier fitting for Zone 1 flameproof installations.

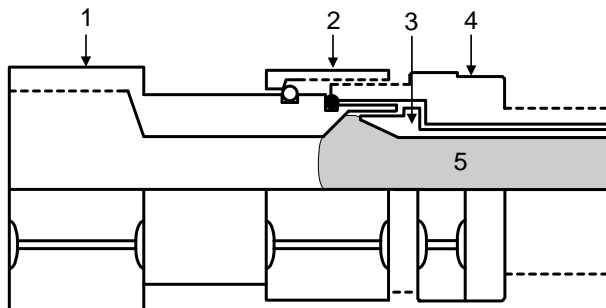
Description: An easy to use fitting incorporating an internal chamber for packing epoxy putty around the conductors. Intended use is to restrict the passage of gases, vapours or flames from part of the electrical installation to another; prevent pressure piling in conduit systems. The fitting is easily installed due to its swivelling action (union style).

Material: Nickel Plated Brass

Type of Protection: Exd IIB Zone 1

Degree of Protection: IP65

Installation: Refer to Instruction Sheet No.3



- 1. Back Body
- 2. Back Body Nut
- 3. Sleeve
- 4. Front Body
- 5. Packed Chamber

Catalogue Number	Bore (mm)	Male Entry	Female Entry
FB - 20	13.5	M20 x 1.5	M20 x 1.5
FB - 25	18.0	M25 x 1.5	M25 x 1.5

